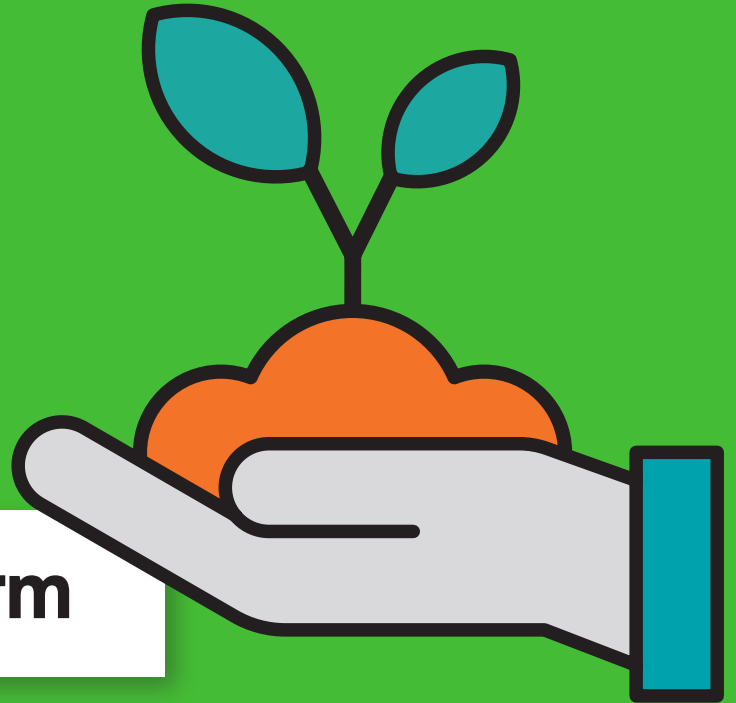


gentoo

# Ready, Set, Grow.



**Application form**

# Is your garden blooming marvellous?

Got a garden, a few pots, a school patch or a shared growing space? Then Ready, Set, Grow is for you! To celebrate 25 years of Gentoo, we're looking for gardens and growing spaces that show care, effort and pride and ideas that will last into the future.

You don't need a big garden or spend lots of money. You just need to give it a go!

## Categories

### Best Customer Garden

For customers who take pride in their garden, whatever the size. Judges will look at care, enjoyment and the positive difference it makes.

### Best Small Space / Planters / Pots

Perfect for growing in:

- Pots and containers
- Doorsteps, patios or courtyards
- Other small spaces

Creativity in small spaces really counts!

### Community Bloom Award

For shared growing spaces that:

- Bring people together
- Improve neighbourhoods
- Build pride in place

Big or small. community impact matters.

### Best School Garden or Outdoor Learning Space

For schools using gardening to support:

- Learning and wellbeing
- Confidence, teamwork and life skills



Eco clubs, food growing and wildlife spaces are all welcome.

Please submit this application form by **Tuesday 30 June 2026**. Judging will take place in July, with winners to be announced shortly after.

All entries are subject to the correct permissions for any work carried out to Gentoo gardens. If you are unsure whether something is allowed, or if you need advice before entering, please contact your Neighbourhood Coordinator.



### Fire safety matters

To keep everyone safe, entries must follow fire safety rules. This means:

- Doors, escape routes and shared areas must be kept clear at all times
- Balconies must not be adapted and no screens or fixed structures should be added
- Your planting must comply with your tenancy agreement and tenant handbook

**Unfortunately, entries that don't meet fire safety rules can't be judged.**

### 25 Years Forward: Future Grow Award

A special award celebrating Gentoo at 25 and looking ahead. For projects focused on:

- Growing food
- Supporting wildlife and biodiversity
- Sustainable growing
- Creating something that will last for future generations.

Big or small, community impact matters.

# Apply now!

Name: \_\_\_\_\_

Address: \_\_\_\_\_

Telephone number: \_\_\_\_\_

Email address: \_\_\_\_\_

School or Community group name (if applicable): \_\_\_\_\_

\_\_\_\_\_

If you are nominating another person (with their permission) please include your name and contact details below:

\_\_\_\_\_

\_\_\_\_\_

Please tick which category you are entering:

- Best Customer Garden
- Best Small Space / Planters / Pots
- Best School Garden / Outdoor Learning Space
- Community Bloom Award
- 25 Years Forward: Future Grow Award
- I confirm that I have read and understood the judging criteria and that the judges' decisions are final.

Please tell us a bit about your entry and why you would like to apply:

\_\_\_\_\_

\_\_\_\_\_

\_\_\_\_\_

\_\_\_\_\_

\_\_\_\_\_

\_\_\_\_\_

\_\_\_\_\_

\_\_\_\_\_





## How judging works

- Entries must include photos and a short story
- Entries are shortlisted based on the photos provided
- Judges will visit shortlisted entries in July
- We focus on effort, involvement and impact not size or spend

**Taking photos on your phone is absolutely fine, don't forget to include them!**

## How to enter:

**Online:** [www.gentooogroup.com/grow](http://www.gentooogroup.com/grow)

**In person:** Hand this application form in at any local Gentoo office or give it to your Neighbourhood Coordinator

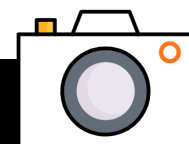
**Post:**

You can post this application form to:

**Communications Team  
Gentoo Group, Emperor House  
2 Emperor Way,  
Doxford International Business Park  
Sunderland, Tyne and Wear  
SR3 3XR**

**Email:**

[communications@gentooogroup.com](mailto:communications@gentooogroup.com)



**Don't forget  
to include photos  
with your application!**

**Good luck!**



## Gardening safety advice



When gardening in small spaces, please keep the following safety points in mind:

- Any electrical items, such as grow lamps or plant incubator heaters, must be in good working order. Take extra care when watering plants near electrical equipment.
- Children should always be accompanied and closely supervised while gardening.
- Compost and some fertilisers can pose a fire risk in certain conditions. For example, compost can overheat if it becomes too dry or tightly packed, and some fertilisers can accelerate fires. These risks can be reduced by using products correctly, keeping compost moist, and turning it regularly if stored.
- Outdoor lighting and candles should be used correctly and with caution at all times.

**By following these guidelines, you'll help ensure your entry is not only creative and attractive, but also safe for you and your neighbours.**

## Permissions and important information

All entries are subject to the correct permissions for any work carried out to Gentoo gardens. If you are unsure whether something is allowed, or if you need advice before entering, please contact your Neighbourhood Coordinator.

Fire safety is very important. Doors, escape routes and shared areas must be kept clear at all times. Balconies must not be adapted, and screens or fixed items must not be added. All entries must follow your tenancy agreement and tenant handbook.

When gardening, please use equipment safely. Electrical items such as grow lamps or heaters must be in good repair, with extra care taken when watering nearby. Children should be supervised at all times. Compost, fertilisers, outdoor lighting and candles should be stored and used correctly and with caution.

**Entries that do not meet fire safety or tenancy requirements cannot be judged.**

**Thank you for following our safety advice.**

